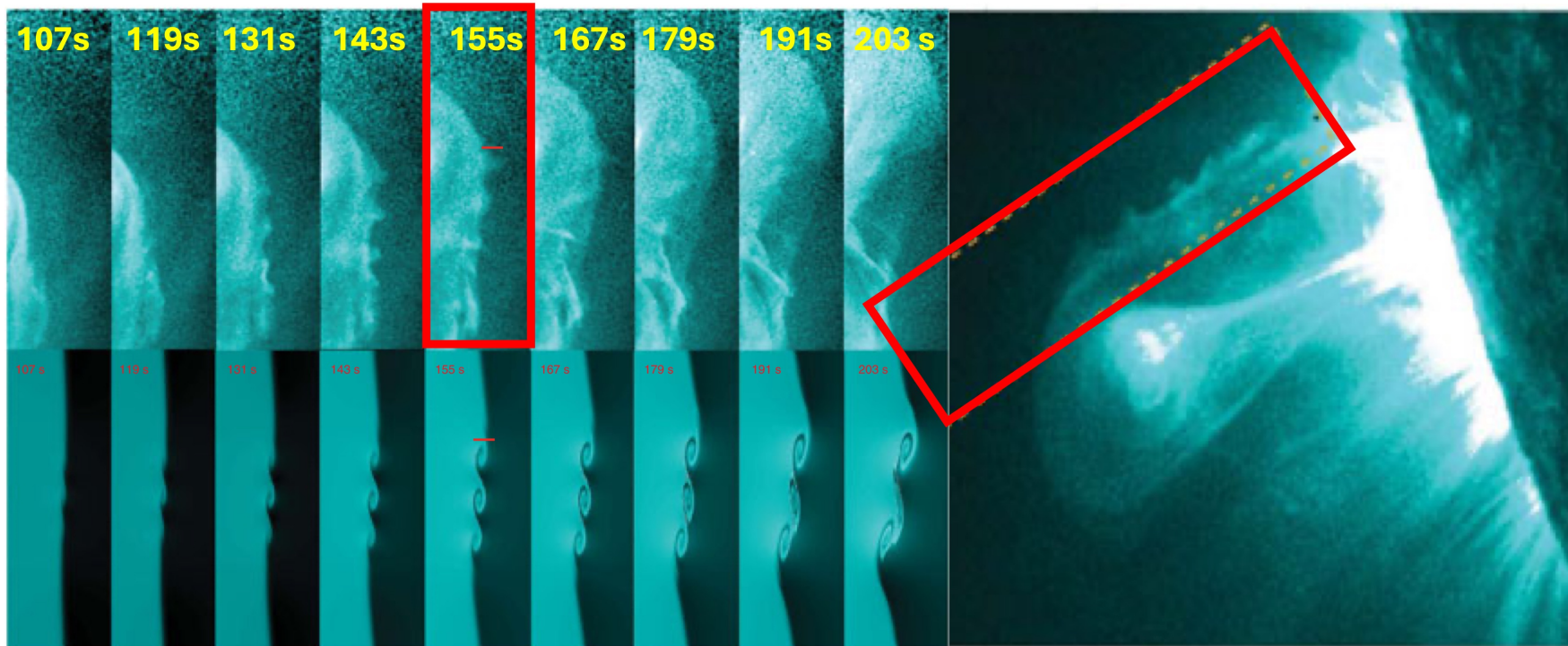


## KH waves are shorter at a CME boundary closer to the Sun but get bigger as CME grows

- KH wavelength depends on the CME boundary layer thickness:  
 $\lambda \sim (2-4)\pi\Delta = 3 \text{ RE} \rightarrow 6 \text{ RE}$ , asymmetric growth of KH waves can change CME direction

**SDO  
Observations**



**MHD  
simulation**